



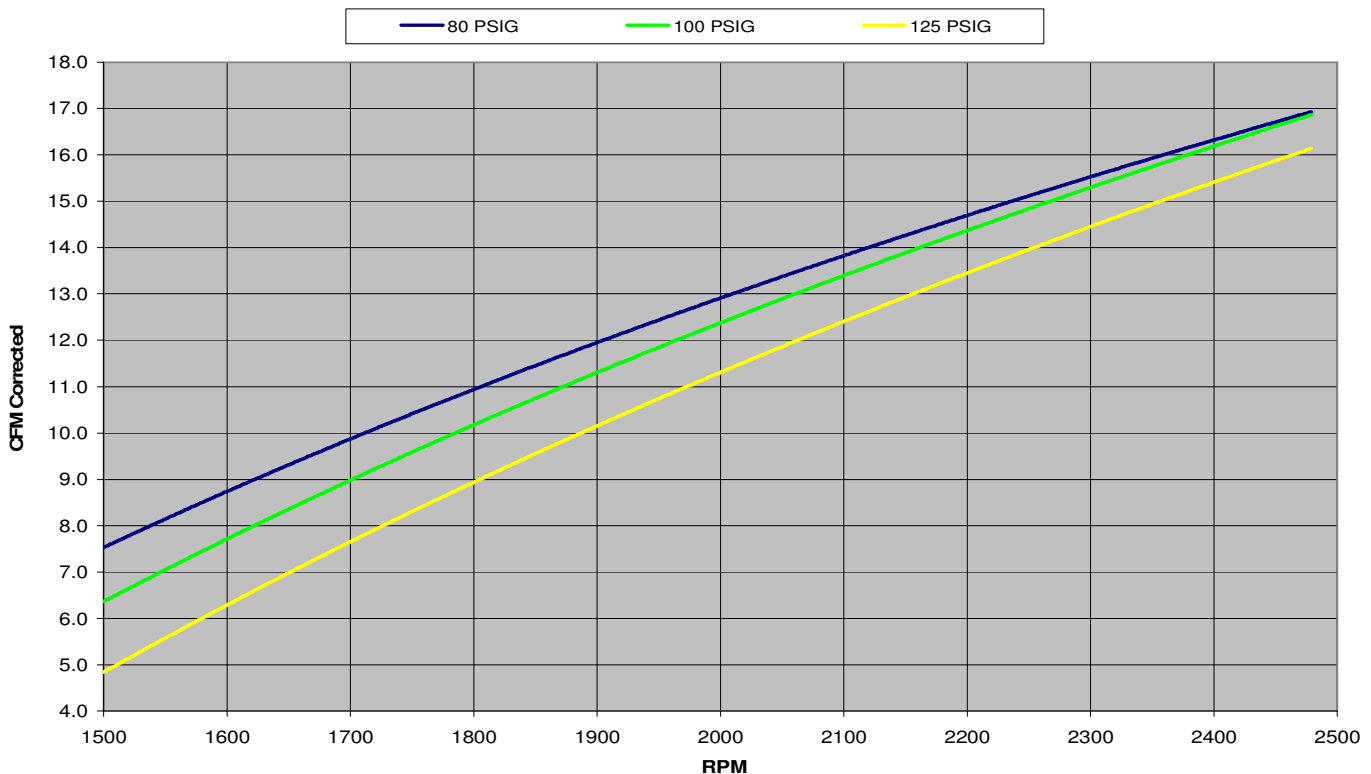
PrecisionAir, LLC
Phone: 219-380-9267
E-mail: scroll@precisionairllc.com
"Sustainable compressed air solutions"

PrecisionAir Oil-Free Scroll Air End – Specification Sheet

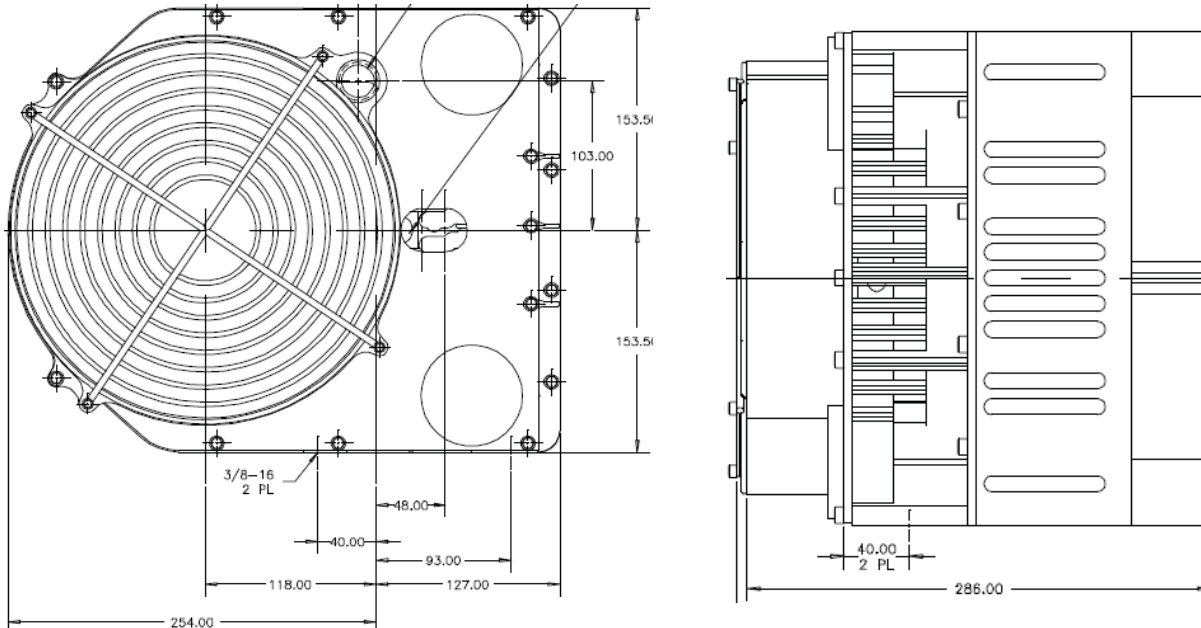


SPECIFICATIONS:

- Operation:** Rotating (orbiting) positive displacement
 - Construction:** Cast Aluminum to minimize weight and maximize heat transfer for optimal cooling
 - Footprint (inches):** 11.26L x 15.0W x 12.09H - Air End with housing, does not include motor
 - Weight (lbs):** 58 – Air End with housing, does not include motor
 - Maximum Pressure (PSIG):** 125 – consult PrecisionAir for higher pressure requirements
 - Maximum RPM:** 2500 (85 Hz)
 - Cooling:** Air Cooled with integral idler driven axial fan, air flow direction dictated by application
 - Maximum Ambient Operating Temperature:** 122°F (50°C)
 - Discharge Temperature:** < 300°F at 80°F ambient
 - Discharge Port:** ½ Inch NPT (1/2" nominal hose)
 - Inlet Port:** ¾ Inch NPT for off-the-shelf air filter
 - Motor:** specified by customer, inquire with PrecisionAir about existing options
 - Drive:** specified by customer, can be direct or belt driven; fixed or variable speed drive
 - Sound Level (dBA):** Varies by application
 - Environmental Enclosure:** Customer specified depending on application requirements
 - Maximum Duty Cycle:** Continuous
 - Mounting Orientation:** Horizontal
 - Maintenance:** Varies by application (scroll pack exchange)
 - Warranty:** 1 Year
 - Vibration:** dynamically balanced for vibration free operation
- Performance :**



General Arrangement:



Features and Benefits:

Efficiency – non-contacting parts results in low friction and higher efficiency. Scaleable and modular design with the option to be driven with a variable frequency drive to most efficiently meet actual demand at any given time.

Reliability – proven technology with minimal moving parts, all non-contact

Oil Carryover – Zero, Oil-Free compression is inherent to the scroll design

Maintenance/Lifecycle Costs – only two wear items (tip seals/bearings) and an inlet filter (off-the-shelf) with long maintenance intervals. NO inlet valve, oil changes, oil filter, air/oil separator or oil cooler.

Meets DOT FMVSS 121 standard for required pump up time on commercial vehicles

SAE J1455 certification – pending (contact PrecisionAir for details)

Engineering Support:

PrecisionAir can provide full engineering support to fully integrate the scroll air end into an existing OEM package or to develop a custom package based on customer and market requirements. Please inquire with PrecisionAir to discuss specific product and package requirements.